

California Energy Commission

DOCKETED

09-RENEW EO-1

TN # 75014

FEB 23 2015

22 February 2015

California Energy Commission
Dockets Office, MS-4
Docket No. 09-RENEW EO-01
1516 Ninth Street
Sacramento, CA 95814-5512
Re: DRECP NEPA/CEQA

To Whom It May Concern,

I have been a member of the Sierra Pelona Rock Club (SPRC) for fifteen years. Our club is very active with a monthly collecting trip nine months of the year. Many members go out additional times to collect as well. I believe we are one of the more active clubs in going out and collecting. Many other clubs join us. We have also taken groups of boy scouts and girl scouts to places like Gem Hill. We have done this multiple times as Gem Hill has easy access and collection. We have hosted upwards of forty girl scouts, not counting parents or club members. The picture below is a small girl scout troop at Gem Hill.

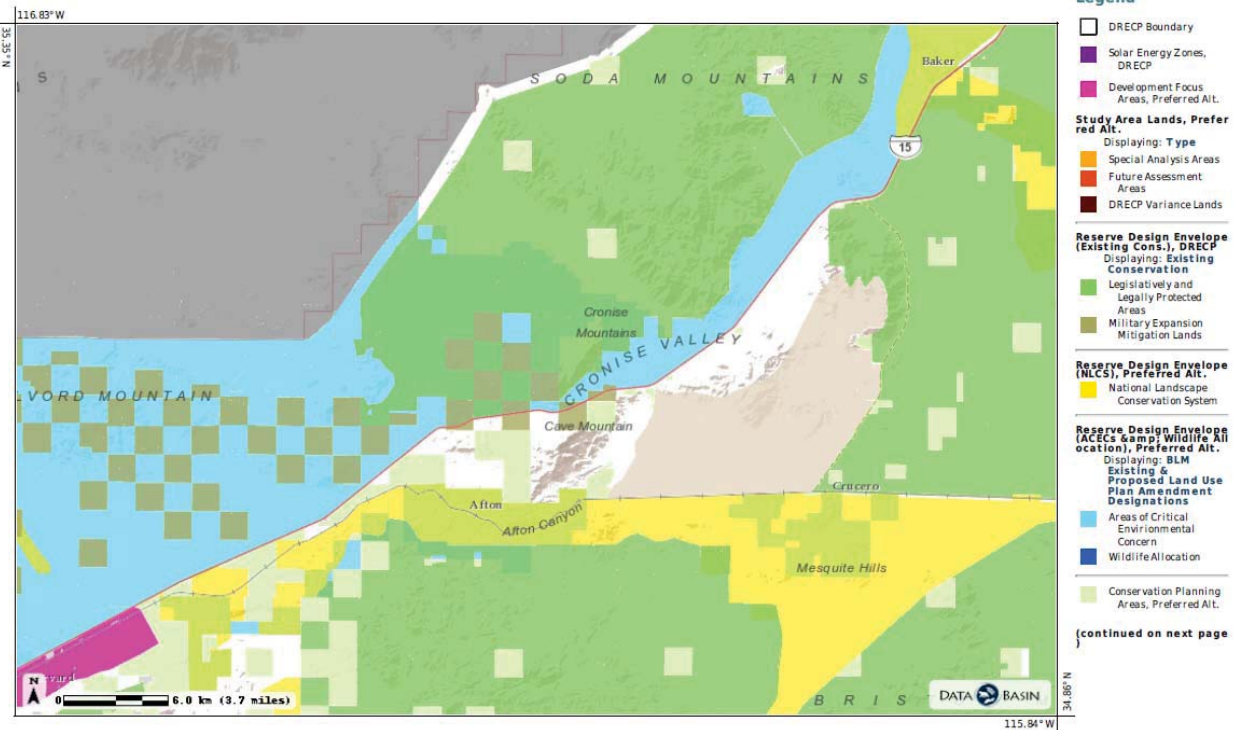


I have a masters degree and find this whole task a bit daunting. I know this has been going on for awhile, but the amount of data and information available is very overwhelming. I could see where it might take someone over a year to go through it all. Our club has several older members who still collect but don't have a computer. Why is the response only allowed to be in MS Word or PDF format? Why not plain text? How do you expect to hear from everyone? Anyway, I can only comment on those places I know about. Unfortunately if someone doesn't preserve other collecting areas, then they may be lost forever.

My club has been going to many of the same sites because material is plentiful. It would be impossible to just trade a piece of land for another in our case as the first location may be a collecting site, where the second may be just a patch of sand. The SPRC mostly collects in the Mojave desert close to where we are located. I am not against preserving land or energy conservation. I would like to keep many roads that might be closed open for future collecting. Unfortunately it is very difficult to ensure what stays open or what might be closed with the loose wording of the DRECP.

Afton Canyon

Afton Canyon is Located off I-15 at the Afton Turnoff about 32 miles east of Barstow and 25 miles west of Baker. This area has long been a rockhound area with many types of agate, sagenite, jasper and opalite. We ask that this area, along with the roads and trails be considered for Special Recreation Management Area.



Afton Canyon

Blythe

The Blythe collecting area is located at T4S, R20E (Blythe DAG). It is north of the Palen McCoy Wilderness and south of the Little Maria Mountains. A Development Focus Area (DFA) appears to cover at least a portion of this psilomelane collecting area. I ask the BLM to redefine or redraw the DFA so that it does not cover this area, with at least a 1,000-foot radius around it that includes any designated routes that allow access to this collecting area.

Boron

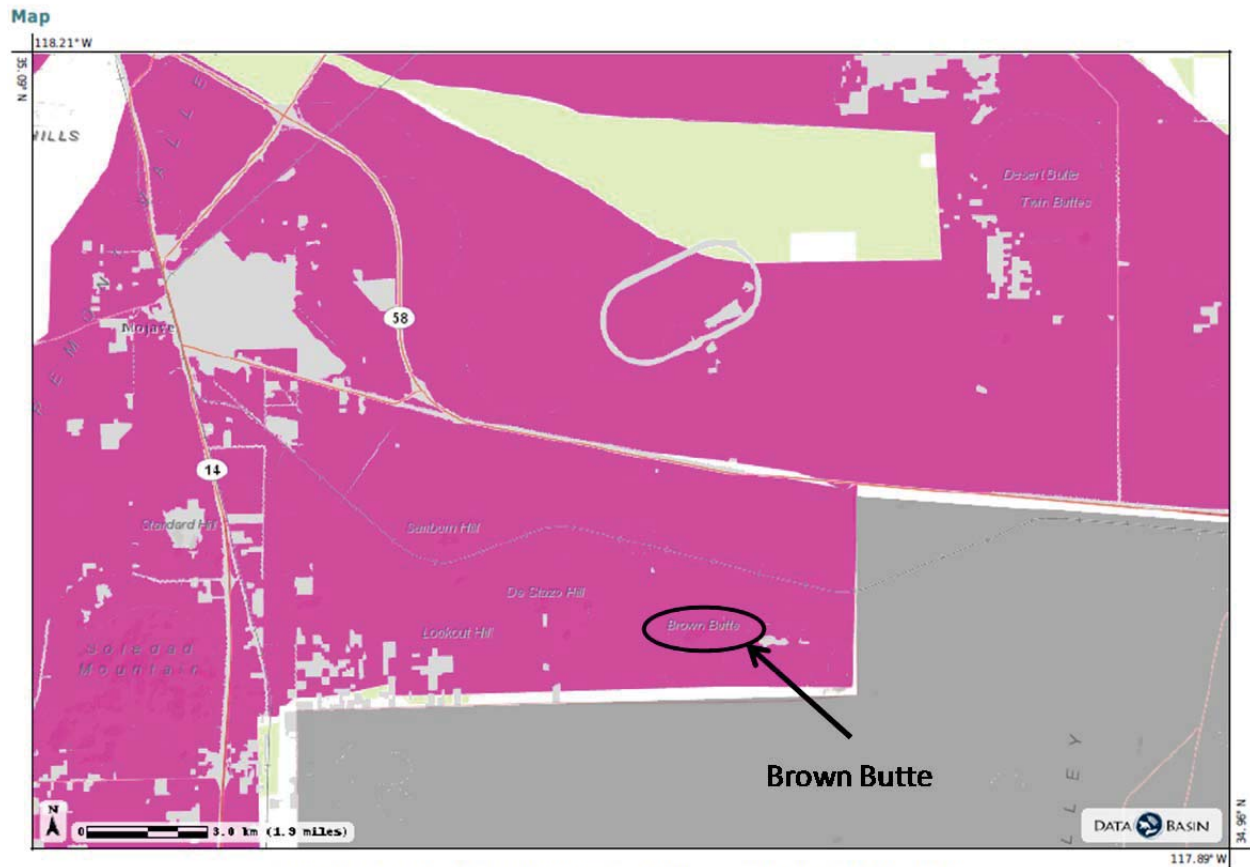
The Boron collecting area is located between Saddleback Mountain and California City Boulevard, north of Highway 58 and south of Twenty Mule Team Parkway (Cuddeback Lake DAG). This collecting area, which contains petrified wood, chapenite, jasper and agate, is within a DFA. I ask the BLM to redefine the DFA so that it does not cover the Boron collecting area, with at least a 1,000-foot radius buffer around it that includes any designated routes that allow access to this collecting area.



Brown Butte (aka Lonely Butte)

The Brown Butte collecting area is located at T10N, R11W, Sections 2, 3, 10 & 11 (Lancaster DAG). This collecting area, which is good for petrified reeds, agate, jasper, and jasp-agate, is within a DFA. I ask the BLM to redefine the DFA so that it does not cover this area, with at least a 1,000-foot radius buffer around it that includes any designated routes that allow access to this collecting area.

Brown Butte in focus area.



For an interactive map with legend go to: <http://drecp.databasin.org/maps/85d34bc2ca624424b4d93739dd4de692>

Gem Hill

The Gem Hill collecting area is located at T10N, R13W, Sections 26, 27, 34, and 35 (Lancaster DAG). This collecting area, which is good for agate, jasper, rhyolite, common opal, and petrified wood, is within a DFA. I ask the BLM to refine the DFA so that it does not cover this area, and at least a 1,000 foot radius around it, and any designated routes that allow access to this collecting area.



Hector Hills

There is a very small DFA near this collecting area, located at T8N, R5E, Sections 4, 5, 6, 15, 16, 21 and 22 (Newberry Springs DAG). This DFA is only a problem if it would block or deny access to Pisgah Crater Road. If it would, I ask that it be redefined so that it does not deny access.

Hauser Beds

The Hauser Beds collecting area is located at T 8 ½ S, R 19 E, Sections 1, 2, 4, 6, 8, 10, 11, 12, 14, 18, 20, 21, 22, 24, 26, and 28; T 8 ½ S, R 19 E, Section 16; T 8 ½ S, R 20 E, Sections 6, 7, and 18 (Trigo DAG). Not only is this area one of the best collecting areas in our deserts, it is covered by a Memorandum of Understanding between the U.S. Bureau of Land Management and the California Federation of Mineralogical Societies, Inc. The MOU was signed on February 22, 2000, and has never been terminated by either party. The MOU recognizes the importance of the Hauser Geode Beds area as a major recreation area for dispersed rockhounding recreation. It appears as though the Mule Mountain LTVA SRMA partially covers this collecting area. I ask the BLM to expand this SRMA to fully include the entire Hauser Beds area, as described above. I also ask the BLM to acknowledge the MOU at the District and State Office levels and expressly state in the SRMA that this MOU shall continue.

Kramer Junction

I understand that certain groups are lobbying to have certain DFAs relocated to the Kramer Junction area (Victorville DAG). I am opposed to any DFA being placed on the southeast corner of Kramer Junction (south of Highway 58 and east of Highway 395), as this is a collecting area for dendritic agate, common opal, and obsidian.

Lavic and Jasper Hill

The Lavic and Jasper Hill collecting areas located at T8N, R5E, Sections 13, 14, 15, 22, 23, 24, 25, 26, 27, 34, 35, 36 and T8N, R6E, Sections 18, 19, 20, 30, 29, 31, 32, and T9N, R4E, Sections 29, 30, 31, and 32 (Newberry Springs DAG). These jasper collecting areas are located within the Route 66 viewshed, between Ludlow and Newberry Springs. I appreciate that the BLM is proposing the National Trails Viewshed SRMA, which protects various recreational activities along Route 66. I especially appreciate the fact that the BLM has specifically recognized the importance of collecting in the Trilobite and Ship Mountains, and has created a Recreation Management Zone to protect collecting in those areas. However, this SRMA does encompass some very special collecting places along Route 66. I ask the BLM to increase the size of the National Trails Viewshed SRMA, so that it includes the Lavic and Jasper Hill collecting areas, and specifically allows collecting in these areas.



Thank you for your time and interest in the future of rockhounds in the desert.

Greg Mazourek

[REDACTED]

Santa Clarita, CA 91387

[REDACTED]