

Mesquite Valley Extensive Recreation Management Area (ERMA)

Management Objective: Designate this area as an Extensive Recreation Management Area. To manage for outstanding views and dispersed recreational use. Mesquite Valley ERMA encompasses the public lands in Mesquite Valley. The ERMA runs southeast for about 12 miles from the far northeast corner of the Field Office. The area is bordered on the east by the Nevada State Line, on the north by the San Bernardino County Line, on the west by the North Mesquite and the Mesquite Mountain Wildernesses, and the south by the Stateline Wilderness. The northern half of unit is checker boarded with private land with Mesquite Dry Lake dominating the southern half.

The management objectives for each dry lake dictate the area's use and special monitoring requirements needed to protect their resource values and designates the Mesquite Dry Lake is included in this area as closed except for approved routes (2002 Northern and Eastern Mojave Desert Management (NEMO) Plan). Several routes throughout the area are utilized for the B-to-V dual sport event. This dual sport event is held annually. The area is highly valued by local communities, visitors, and the Native American Tribe for cultural and historic values. Historic resources within the area include railroading, mining, ranching, routes, and trails.

Primary Activities: Back Country Touring, Equestrians, Hunting, Photography, Star gazing, Camping, Hiking, Permitted commercial and organized events

Experiences: Enjoyment of Horseback Riding

Benefits:

Personal: Increased sense of exploration in an area designed to encourage environmental education through non-motorized recreation.

Community/Social: Increases tourism and supports local economy

Environmental: Greater protection for historical area and a reduction of area vandalism through developed facilities designed to blend naturally into the unique landscape while preventing visitation impacts on the surround habitat.

Management Actions and Allowable Uses

Recreation and Visitor Services Program:

- The Bureau of Land Management (BLM) will manage the Mesquite Valley Extensive Recreation Management Area (ERMA) in a custodial manner to ensure quality of dispersed recreation experiences and opportunities;
- Routine maintenance of the Mojave Adventure Trails System shall occur including installation of routine signs, markers, culverts, ditches, water bars, barriers, gates, or cattle guards on/or adjacent to system roads and trails.
- Issuance of Special Recreation Permits for day use or overnight use up to 14 consecutive nights; that impact no more than 3 staging area acres; and/or for recreational travel along roads and trails designated open in the land use or accompanying activity level plans.
- Maintain interpretive developments and material which enhance recreation opportunities and public enjoyment and to better appreciate the significance of this historic site.

- Routine maintenance of the Mojave Adventure Trails System shall occur including installation of routine signs, markers, culverts, ditches, water bars, barriers, gates, or cattle guards on/or adjacent to system roads and trails.
- Any developed recreation sites that would be impacted by renewable energy development would be mitigated through establishment of alternate recreation sites in a similar, suitable location.

Acres on BLM Lands:

No Action	Preferred Alternative
0	37039

Other Programs:

Visual Resource Classes

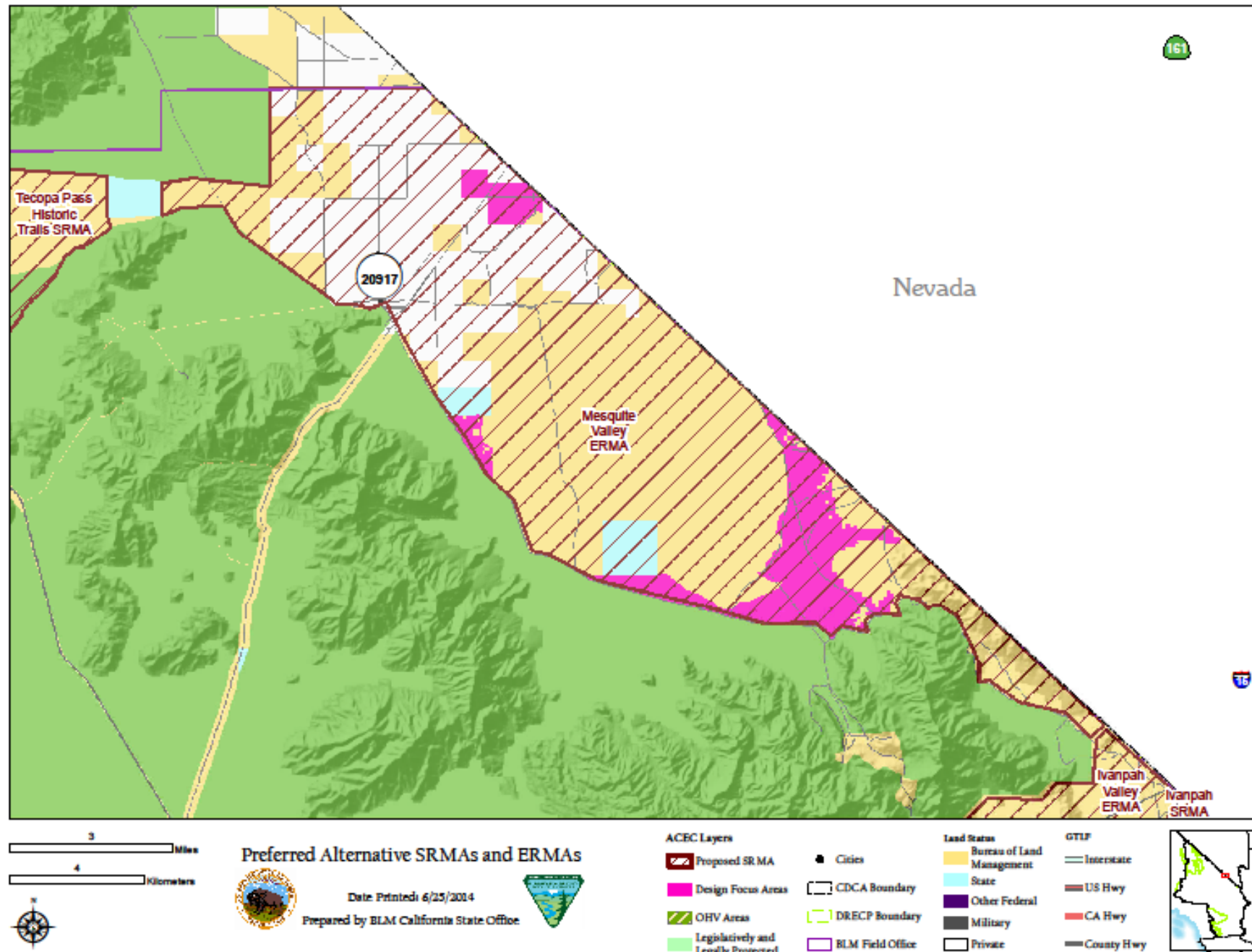
Stateline Pass – Class III

Mesquite Lake and Shoreline Area – Class II

Wildlife Game Guzzler Program

Grazing Allotment (Taylor Grazing Act)

Mesquite Valley ERMA



The information and maps shown on this system should be used for planning purposes only. It should not be the sole source for determining map boundary locations.