



## DESERT RENEWABLE ENERGY CONSERVATION PLAN

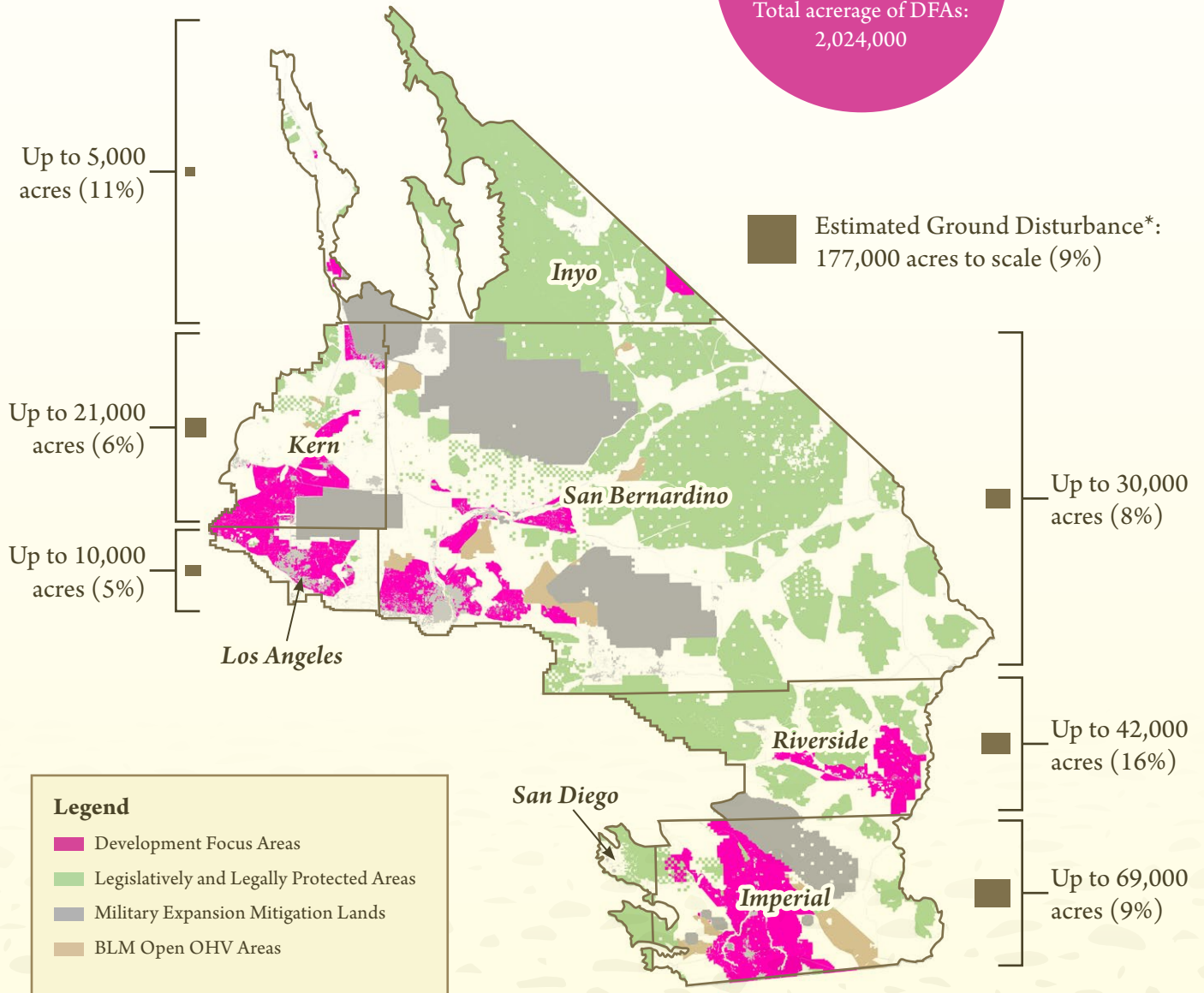
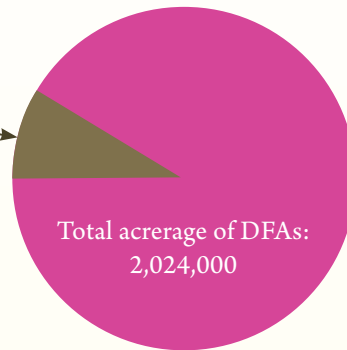
### Development Focus Areas

Development Focus Areas (DFAs) are the locations where renewable energy generation projects can be built with streamlined approval under the DRECP. The draft plan alternatives vary in geographic distribution and extent of the DFAs.

- Permits under the Natural Community Conservation Plan (NCCP) and General Conservation Plan (GCP) cover renewable energy generation projects sited in DFAs, and the BLM Land Use Plan Amendment (LUPA) will only streamline and provide incentives for projects sited in these areas.
- Transmission projects are linear projects that cross areas within and outside DFAs. The DRECP will not cover portions of transmission projects that are located outside of the DRECP boundary.
- The DFAs are larger than necessary to accommodate the renewable energy planning assumption in an effort to provide flexibility for siting projects. Only a portion of the DFAs may be developed as part of the final plan.
- Within these areas, the plan does not specify the type of renewable energy technology (i.e., solar, wind and geothermal) that can be developed. The plan makes assumptions about the mix of technologies for the purposes of analysis.
- Within the DFAs, Conservation and Management Actions (CMAs) have been developed that require avoidance, minimization and compensation for effects of preconstruction, construction, operation and decommissioning of renewable energy and transmission projects.

# Preferred Alternative Development Focus Areas and Estimated Ground Disturbance by County

Estimated ground disturbance in DFAs  
(up to 177,000 acres - 9% of the DFAs)



\* To meet the DRECP 20,000 MW planning assumption